

PREPARED BY DESERT VALLEY TESTING FOR:



DESERT VALLEY TESTING

51 W. Weldon Ave

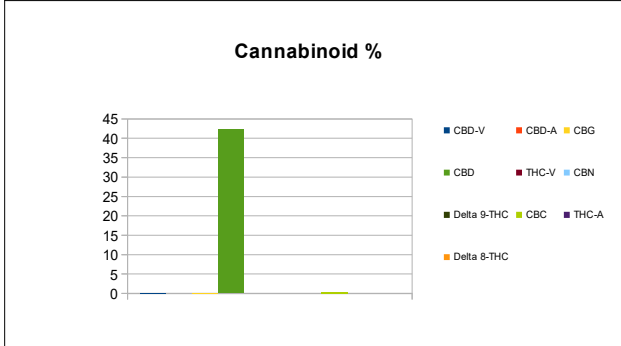
Phoenix, Arizona 85013

480-788-6644

www.desertvalleytesting.com

Sample Information			
Sample Identification	Tincture Flavored Broad Spectrum CBD 1000mg 30 ml		
Laboratory Number	2019013120		
Batch Number	TF19161100030-BS19152D2-IS19135P2		
Matrix	Tincture		
Analyzed Date	06/14/19		
Extraction Date	06/14/19		
Cannabinoid (HPLC)	mg/mL	mg/Bottle	%
Compound			
CBD-V	0.13	3.99	0.01%
CBD-A	ND	ND	ND
CBG	0.05	1.65	0.01%
CBD	42.32	1269.53	4.09%
THC-V	ND	ND	ND
CBN	ND	ND	ND
Delta 9-THC	ND	ND	ND
CBC	0.3	9.09	0.03%
THC-A	ND	ND	ND
Delta 8-THC	ND	ND	ND
Cannabinoids Total			
Max Active THC	ND	ND	ND
Max Active CBD	42.32	1269.53	4.09%
T. Active Cannabinoids	42.81	1284.26	4.13%
Total Cannabinoids	42.81	1284.26	4.13%

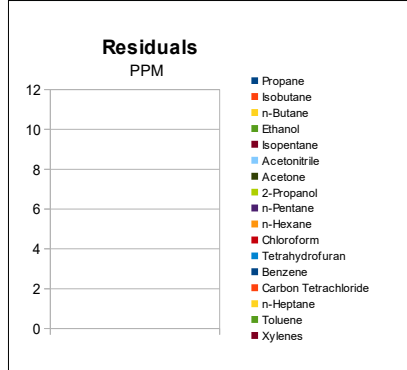
Max Active Ratios			
NA :1 CBD to THC			
ND :1 THC to CBD			



Sample Image



RS (GCMS-MS)	PPM	RL
Compound		
Propane	NT	5.0
Isobutane	NT	5.0
n-Butane	NT	5.0
Ethanol	NT	5.0
Isopentane	NT	5.0
Acetonitrile	NT	5.0
Acetone	NT	50.0
2-Propanol	NT	5.0
n-Pentane	NT	5.0
n-Hexane	NT	5.0
Chloroform	NT	5.0
Tetrahydrofuran	NT	5.0
Benzene	NT	5.0
Carbon Tetrachloride	NT	5.0
n-Heptane	NT	5.0
Toluene	NT	5.0
Xylenes	NT	10.0



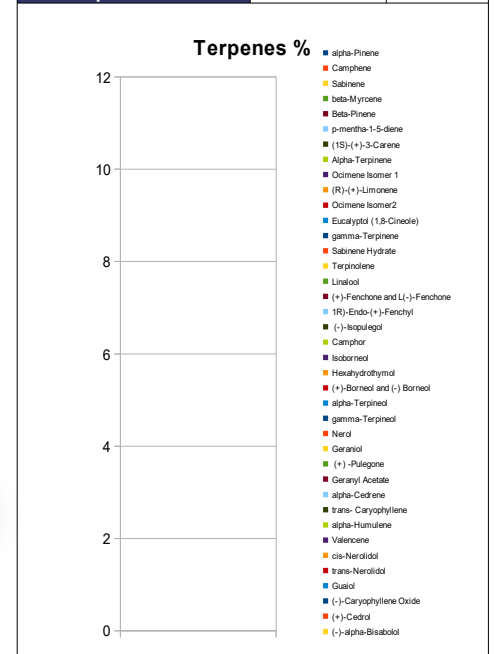
mL/Bottle	30
mg THC/Bottle	ND
mg CBD/Bottle	1269.53
(mg) total cannabinoids/bottle	1284.26

Metals	PPM	RL
Compound		
Lead	NT	0.010
Arsenic	NT	0.010
Cadmium	NT	0.010
Mercury	NT	0.001

RL=Reporting Limit  
 NA=Not Applicable  
 NT=Not Tested  
 ND=Non Detected



Terpene (GC-MS)	mg/mL	mg/Bottle
Compound		
alpha-Pinene	NT	NT
Camphene	NT	NT
Sabinene	NT	NT
beta-Myrcene	NT	NT
Beta-Pinene	NT	NT
p-mentha-1-5-diene	NT	NT
(1S)-(+)-3-Carene	NT	NT
Alpha-Terpinene	NT	NT
Ocimene Isomer 1	NT	NT
(R)-(+)-Limonene	NT	NT
Ocimene Isomer2	NT	NT
Eucalyptol (1,8-Cineole)	NT	NT
gamma-Terpinene	NT	NT
Sabinene Hydrate	NT	NT
Terpinolene	NT	NT
Linalool	NT	NT
(+)-Fenchone and L(-)-Fenchone	NT	NT
1R)-Endo-(+)-Fenchyl	NT	NT
(-)-Isopulegol	NT	NT
Camphor	NT	NT
Isoborneol	NT	NT
Hexahydrothymol	NT	NT
(+)-Borneol and (-) Borneol	NT	NT
alpha-Terpineol	NT	NT
gamma-Terpineol	NT	NT
Nerol	NT	NT
Geraniol	NT	NT
(+) -Pulegone	NT	NT
Geranyl Acetate	NT	NT
alpha-Cedrene	NT	NT
trans- Caryophyllene	NT	NT
alpha-Humulene	NT	NT
Valencene	NT	NT
cis-Nerolidol	NT	NT
trans-Nerolidol	NT	NT
Guaiol	NT	NT
(-)-Caryophyllene Oxide	NT	NT
(+)-Cedrol	NT	NT
(-)-alpha-Bisabolol	NT	NT
Total Terpenes	NT	NT



Chemist: EP  
 Report Expires: 09/14/19